

Further Reading

- The University of South Australia's domestic Cat-Tracker program: www.discoverycircle.org.au/projects/cattracker/
- Pussyfoot: The Cats of Erskineville - a cat study collaboration between vets, artists and a pet technology developer: theoccasionalcollective.com/#/pussyfoot-the-cats-of-erskineville/
- House cats as predators in the Australian environment: impacts and management' by C. Dickman, is a comprehensive study about the ecological impacts of domestic, stray and feral cats, available for free online.
- A national strategy to manage the impact of feral cats on native species, the 'Draft varied threat abatement plan for predation by feral cats' and Australia's Biodiversity Conservation Strategy can be found on the Department of the Environment's website. www.environment.gov.au



Australian Government

National
Landcare
Programme



Low Ecological Services P/L

www.wildlife.lowecol.com.au
lfw@lowecol.com.au
08 89555 222

This project is supported by Territory Natural Resource Management, through funding from the Australian Government's National Landcare Programme.

Front Image by Justin Kennedy

Where Is Your Cat Now?



The cat predicament

We all love our cats. They provide companionship, joy, delight and a feeling of parental responsibility.

When your cat is out and about, it may be vulnerable to injury from vehicles and other animals. This may accrue a hefty vet bill, or worse, a great loss to the family.

Cats wander around reclaiming their territory, as well as hunting instinctively at all hours. This innate behaviour is consistent even amongst pet cats that are well fed.

We are lucky to live in Alice, a place with abundant wildlife. We are uniquely sitting on the boundaries of four bioregions, each with unique animals and plants.

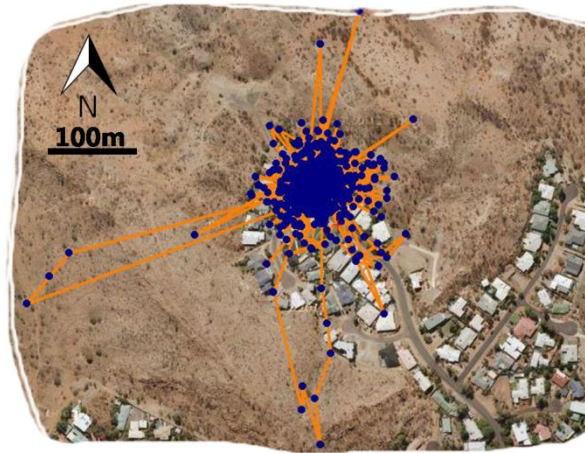
How can we protect our cats **and** our native wildlife?



Bronzewing

Mulgara

Central-netted Dragon



Where has your cat been?

GPS monitoring of pet cats in Alice showed there is plenty to learn about how far, even docile pet cats roam.

To the surprise of most owners, many of the cats monitored roamed far beyond expectations. The image above shows a cat ventured a maximum of 360m into adjacent bushland on several occasions and visited 24 neighbouring properties. This was during a 43 hour period.

Our small study shows that the 17 cats monitored visited numerous parks and reserves as well as neighbouring properties where wildlife live.

Do you know where **your** cat goes?

What can I do?

Is your cat an unwanted visitor in a neighbour's backyard?

Council by-laws state that a cat is 'at large' when it ventures from its yard. When this happens, the cat can be impounded.

- ✓ Desex and register your cat.
- ✓ Keep your cat in.
- ✓ Construct an outdoor playpen.
- ✓ Provide toys and play options for your cat to keep it stimulated.
- ✓ Feel good knowing your cat and our native wildlife are safe.

