

Learn more about the
Domestic Cat Monitoring & Awareness
project by visiting the Land for Wildlife website!
[www.wildlife.lowecol.com.au/
About/Projects/CatMonitoring](http://www.wildlife.lowecol.com.au/About/Projects/CatMonitoring)
Or simply scan the QR Code on your smart phone:



This project has a common theme to
existing domestic cat monitoring programs
throughout Australia, including:

Cat Tracker

A monitoring project coordinated by
Philip Roetman at the University of SA
and the citizen science program Discovery Circle
www.discoverycircle.org.au/projects/cat-tracker/

Pussyfoot: The Cats of Erskineville

A monitoring program with collaboration between
Valentine Charlton Cat Centre at the University
of Sydney, artists Imogen Semmler and
Matt Woodham, and Pet Vision
[www.theoccasionalcollective.com/pussyfoot-
the-cats-of-erskineville/](http://www.theoccasionalcollective.com/pussyfoot-the-cats-of-erskineville/)



Hosted by



Low Ecological Services

Land for Wildlife & Garden for Wildlife

Lot 1858 Isotoma Road, Connellan NT 0870
PO Box 3130, Alice Springs NT 0871

w. wildlife.lowecol.com.au
e. LFW@LowEcol.com.au
p. (08) 89 555 222

This project is supported by
Territory Natural Resource Management,
through funding from the Australian Government's
National Landcare Programme



Domestic Cat Monitoring & Awareness





Where Is Your Cat Now?

We all love our cats -
They provide companionship,
joy, and a feeling of parental responsibility.
But your domestic cat management
could be negatively impacting the local wildlife.

We are lucky to live in central Australia,
an area covering four bioregions,
each containing a diverse range of flora and fauna.
Cats wander to claim their territory, and may hunt
instinctively at all hours.

When your cat is out roaming, it may be vulnerable
to injury from vehicles and other animals.
This may accrue a hefty vet bill, or worse,
a great loss to the family.

Roaming domestic cats may also be a nuisance to
neighbours and disrupt their domestic pets.

Alice Springs Town Council by-laws state that
a cat is 'at large' when it ventures from its yard.
In such cases, a cat can be impounded.

Do you know where your cat goes
and what it gets up to?



Domestic Cat Monitoring & Awareness

Engaging domestic cat owners regarding the
travelling patterns and behaviour
of their feline friends,
to assist owners with making
informed and responsible
cat management decisions

GPS-tracking:

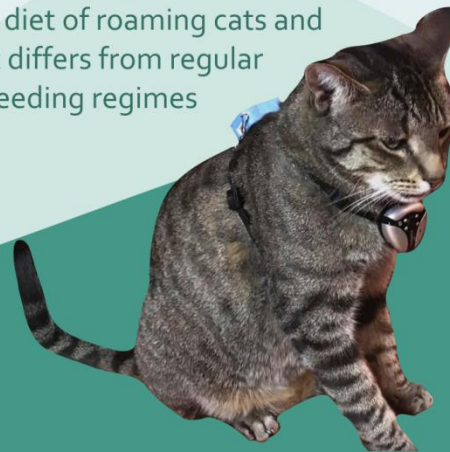
Monitor the spatial travelling
patterns of domestic cats while roaming

Video surveillance:

Record visual footage of the behaviour
of roaming cats

Scat analysis:

Assess the diet of roaming cats and
how it differs from regular
feeding regimes



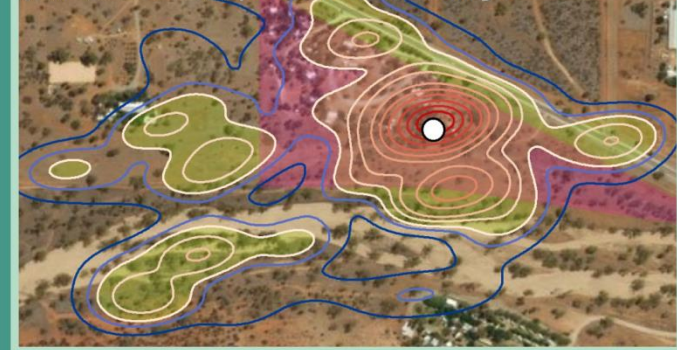
CAT TRACKS

(All tracked movements over a three day period)



HOME RANGE HOTSPOTS

(Yellow shaded areas represent the core home range)



*Possum travelled 500 m from home and had a home range
of 25 hectares. He spent 30% of his time outside of the
property boundary - visiting river systems, native wildlife
habitat, roadside verges, and neighbours.*

Protecting our cats and our wildlife
relies on responsible management

What you can do to manage your cat responsibly:

- 🐾 De-sex, microchip and register your cat
- 🐾 Keep your cat indoors or
install an enclosed outdoor cat play area
- 🐾 Fit your cat with a bell, luminescent scrunchie,
sonar or other device to alert wildlife to its presence