

Frog Hollow

Varieties Included:

33 Species

Affectionately Known As:

Frog Hollow

Area Number:

1

Location of Area:

Frog Hollow, 29 Lindsay Street,
Darwin NT

GPS:

-12.45824, 130.84183

Categories of Significance:

Unique Location
Group
Habitat

Number of Trees:

33 Species

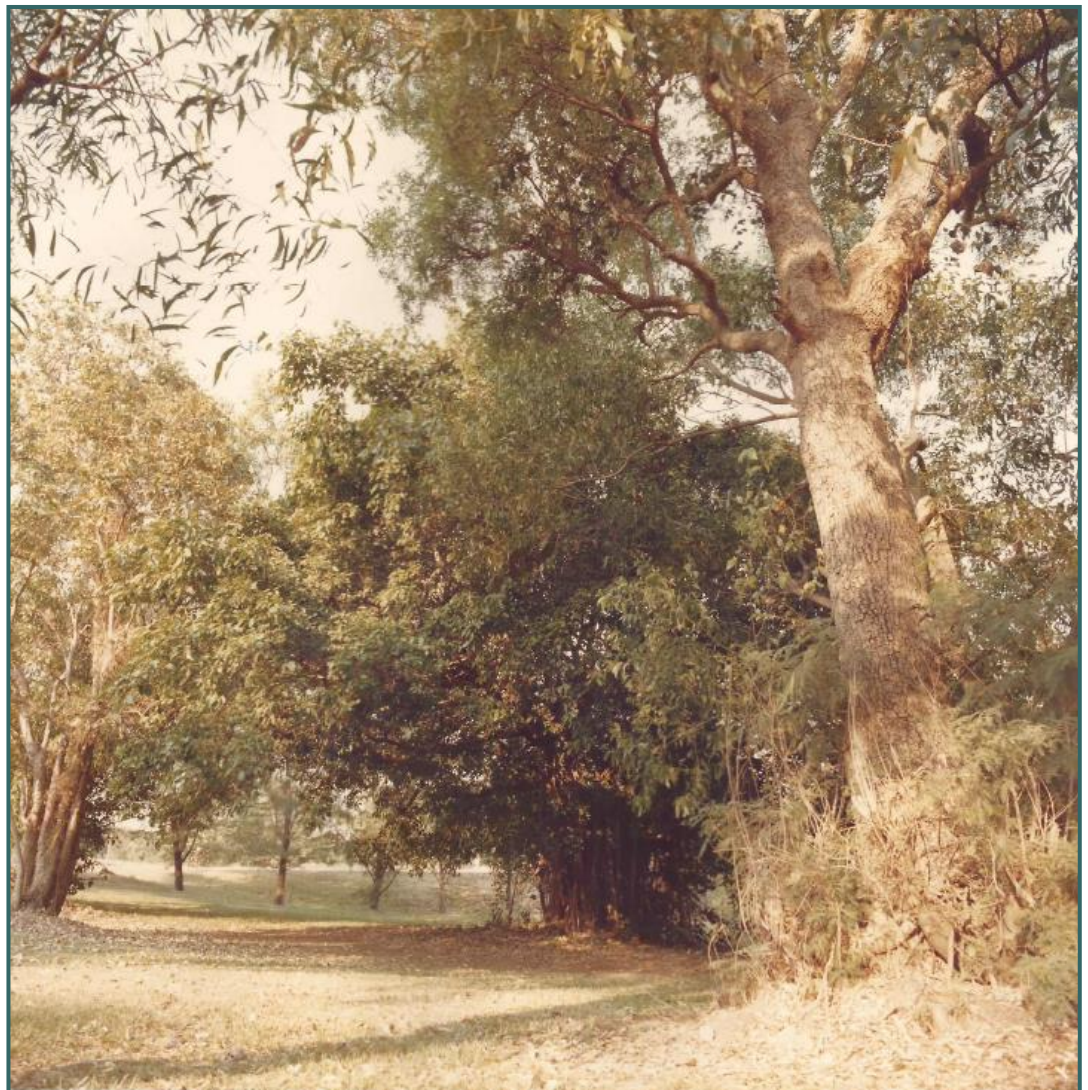
Date Planted:

From 1950

Year Listed:

1986

Frog Hollow was originally a natural drainage line which became a wet season creek. Following the construction of Darwin Primary School in 1952, the creek was filled and grassed over. While the surface contours were modified and smoothed to form gentle slopes, the basic shape of Frog Hollow remains. The remnant vegetation suggests that tropical monsoon forest once graced the area.



Proudly sponsored by

