

Schinus molle — Peppercorn Tree

Scientific Name:

Schinus molle

Common Name:

Peppercorn Tree

Register Number:

5

Location of Tree:

Old Heavitree Gap Police Station, Alice Springs NT

GPS:

-23.72767, 133.86311

Categories of Significance:

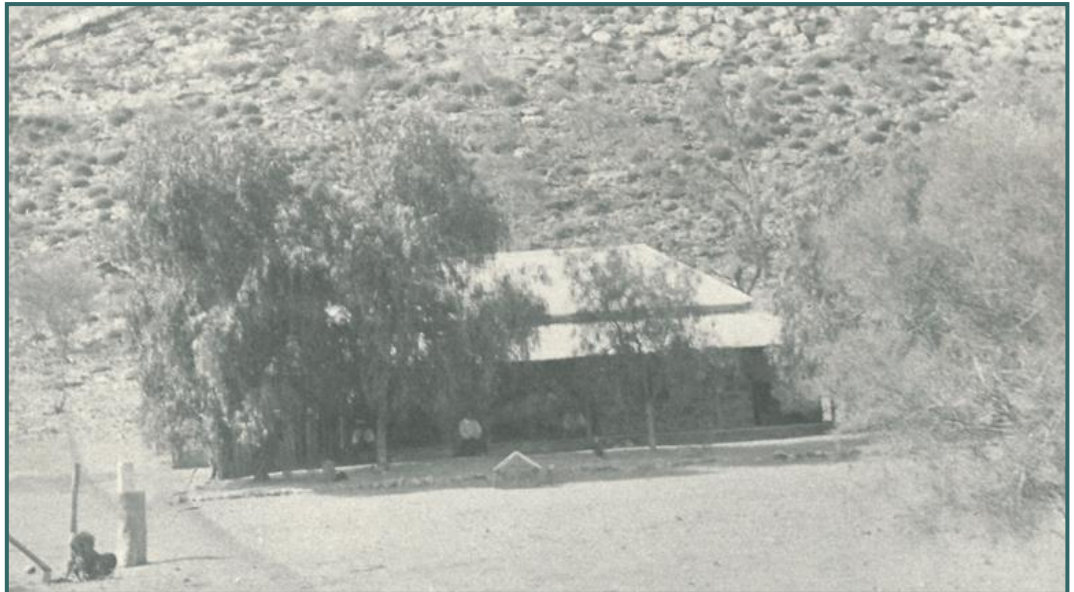
Historical
Unique Location

Date Planted:

Pre 1900's

Year Listed:

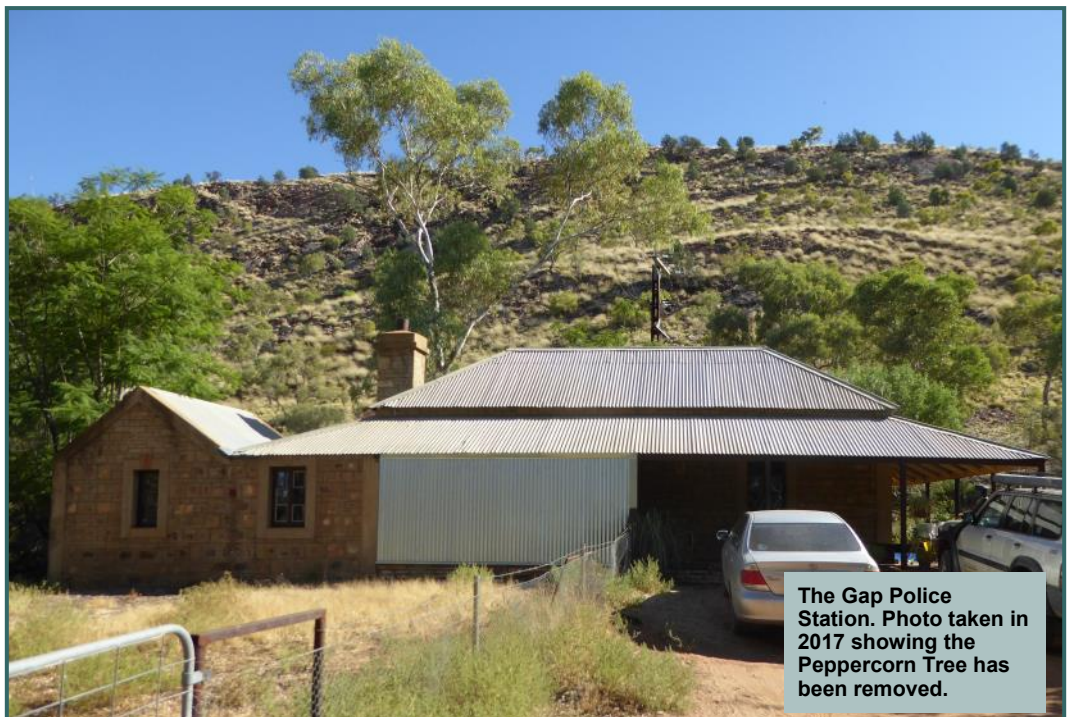
1988



This tree was planted next to the Heavitree Gap Police Station, established in 1886. Historic photos taken in 1900 show the Peppercorn Tree as quite well established. These Peppercorns are thought to be the earliest surviving 'historical' pepper trees in the region.

This tree was cut down in November 2012 due to the danger of it falling on the adjacent heritage listed Police Station. Many other pepper trees on the property had also started to die off and fall down during this time.

The Peppercorn Tree is not native to Australia, but rather hails from the Peruvian Andes. It was planted heavily around the Alice Springs region in the 1930's and 40's for its fast growing, drought tolerance, and shade producing qualities. However in parts of Australia the species has become quite invasive.



The Gap Police Station. Photo taken in 2017 showing the Peppercorn Tree has been removed.

