

Drainage Features

LAND UNIT 5.13

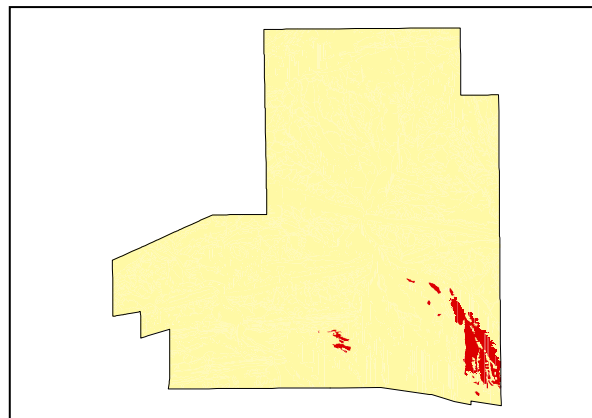
Remnant Loamy Sand Deposits

DESCRIPTION: Remnant loamy sand deposits with Witchetty Bush over Buffel Grass.

SITES: 080, **098**, 100, 101, 103, 112



Distribution of land unit.



Area = 6.14 km², 1.87% of mapped area.

LAND CAPABILITY:

ATTRIBUTES	
SLOPE (%)	2
RELIEF (m)	5
SOIL DEPTH (m)	>2.00
SURFACE CONDITION	Loose
DEPTH TO SUBSTRATE (m)	>2.00
REACTION TREND (pH)	7.0
OUTCROP (%)	-
RUNOFF	Slow
PERMEABILITY	Highly permeable
DRAINAGE	Well drained
SALINITY (µs/cm)	15.1 to 26.2

DEVELOPMENT RISKS	
EROSION	High
ROCK FALL	None
SHEET FLOODING	High
INUNDATION	Slight
SALINITY	None
ALKALINITY	None
ACIDITY	None

CAPABILITY CLASS					
Formed Roads	Shallow excavations	Septic Disposal	Horticulture	Building Foundations	Landscaping
Good	Very Good	Very Good	Very Good	Good	Very Good

Drainage Features

TECHNICAL DETAILS**LAND UNIT 5.13**

DESCRIPTION: Remnant loamy sand deposits with Witchetty Bush over Buffel Grass.

GEOLOGY: An accumulation of Quaternary, most likely Pleistocene, sediments. This land unit formed due to the floodout of the Todd River during major, infrequent flooding episodes.

LANDFORM: Prior alluvial fan deposits, probably relic features, inactive under current climatic conditions. The gently undulating plains of this land unit can be up to 2km in width and extend for about 6km in length with a gentle slope of 1%.

SOIL: Example from **Site 098**
MGA. Coordinates: 7368525mN, 391168mE.

CLASSIFICATION: Desert Loam. Tenosol - TE, DS, AO, AR, D, E, K, K, X					
SURFACE: Loose with occasional coherent mass of individual particles or aggregates that separate when touched.					
DEPTH (m)	HORIZON	TEXTURE	pH	SALINITY (µs/cm)	OTHER DETAILS
0.00 - 0.01	A1	Clayey sand (CS)	7.0	15.1	Dark red (2.5YR3/6). Massive apedal structure with an earthy fabric and weak strength. Non-effervescent.
0.01 - 0.20	A1	Clayey sand (CS)	7.0	16.1	Dark red (2.5YR3/6). Massive apedal structure with an earthy fabric and weak strength. Non-effervescent.
0.20 - 0.70	A1	Clayey sand (CS)	7.0	26.2	Dark red (2.5YR3/6). Massive apedal structure with an earthy fabric and weak strength. Non-effervescent.
0.70 - 1.10	B21	Loamy sand (LS)	7.0	18.1	Dark red (2.5YR3/6). 5% fine gravelly angular quartz fragments. Single grained structure with a sandy fabric. Non-effervescent.
1.10 - 1.50	B21	Loamy sand (LS)	7.0	17.9	Dark red (2.5YR3/6). 10% fine gravelly angular quartz fragments. Single grained structure with a sandy fabric. Non-effervescent.
1.50 - 1.70	B22	Sand (S)	7.0	21.6	Yellowish red (5YR4/6). 15% fine gravelly angular quartz fragments. Single grained structure with a sandy fabric. Non-effervescent.
1.70 - 2.00	B22	Sand (S)	7.0	17.6	Yellowish red (5YR4/6). 5% fine gravelly angular quartz fragments and 5% 6-20mm medium gravelly angular quartz fragments. Non-effervescent.

VEGETATION: **Site 8** (Albrecht, D. and Pitts, B. 1999).
In the absence of exotic grasses, these areas support a lower stratum of Erect Kerosene Grass.

UPPER STRATUM - Isolated trees	
Dominant species	Witchetty Bush
Other species	
MID STRATUM - Isolated shrubs	
Dominant species	Witchetty Bush
Other species	Ironwood, Colony Wattle, Fork-leaved Corkwood, Mulga, Desert Cassia, Ironwood Mistletoe.
LOWER STRATUM - Open grassland	
Dominant species	Buffel Grass
Other species	Erect Kerosene Grass, Flannel Cudweed, Tall Copper Burr, Bunched Kerosene Grass, Buckbush, Five-minute Grass, Billybuttons, Munyeroo, Woollybutt Grass, Annual Yellow Top, Bindieye, Variable Daisy, Climbing Saltbush, Tropical Speedwell, Wild Hops, Mueller's Peppergrass, Fairy bells, Sticky Indigo, Dwarf Swainsona, Woolly Yellow-heads, Veined Peppergrass, Small Yellow Daisy, White Paper Daisy, Smooth Mustard, Nodding Thread-petal, Ruby Saltbush, Wire-leaf Mistletoe, Pale-leaf Mistletoe, Silky Cowvine, Paper Foxtail, <i>Boerhavia repleta</i> , Creek Windmill Grass, Mallee Lovegrass, Paper Foxtail, Cattle Bush, Hogweed.

(See Appendix 3 for botanical names)