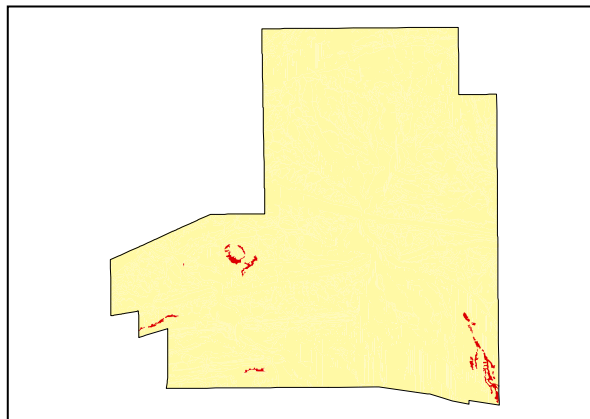


Drainage Features

LAND UNIT 5.10**Relic Gravelly, Sandy Drainage Depressions**

DESCRIPTION: Remnant drainage channel with a sandy, gravelly profile. Ironwood, Corkwood and Witchetty Bush over annual and perennial grasses.

SITES: 076, 099

**Distribution of land unit.**

Area = 1.61 km², 0.49% of mapped area.

LAND CAPABILITY:

ATTRIBUTES	
SLOPE (%)	2
RELIEF (m)	2
SOIL DEPTH (m)	>2.00
SURFACE CONDITION	Loose. Firm in part.
DEPTH TO SUBSTRATE (m)	>2.00
REACTION TREND (pH)	7.0
OUTCROP (%)	-
RUNOFF	Very slow
PERMEABILITY	Highly permeable
DRAINAGE	Well drained
SALINITY (µs/cm)	16.3 to 27.0

DEVELOPMENT RISKS	
EROSION	Severe
ROCK FALL	None
SHEET FLOODING	Severe
INUNDATION	Severe
SALINITY	None
ALKALINITY	None
ACIDITY	None

CAPABILITY CLASS					
Formed Roads	Shallow excavations	Septic Disposal	Horticulture	Building Foundations	Landscaping
Poor	Very Good	Very Good	Very Good	Fair	Very Good

Drainage Features

TECHNICAL DETAILS**LAND UNIT 5.10**

DESCRIPTION: Remnant gravelly and sandy drainage channels. Ironwood, Corkwood and Witchetty Bush over annual and perennial grasses.

GEOLOGY: An accumulation of Quaternary, most likely Holocene, sediments eroded and transported from the high relief Proterozoic and Palaeozoic hills and ranges form this land unit.

LANDFORM: This land unit is within a broader flood plain or a broad drainage system. It forms part of the flood out system of drainage channels that flow only during infrequent larger flooding episodes. This land unit forms subtle drainage depressions that retain a good vegetation cover due to the underlying palaeochannel drainage system. It differs from land unit 5.09 by the sandier nature of the soil and a slight variation in vegetation cover.

SOIL: Example from **Site 099**
MGA. Coordinates: 7369157mN, 390518mE

CLASSIFICATION: Desert loam. Kandosol - KA, AA, AH, CD, C, E, L, L, X

SURFACE: Firm, coherent mass of individual particles or aggregates with occasional loose aggregates that separate when touched. Some areas show cryptogam coating.

DEPTH (m)	HORIZON	TEXTURE	pH	SALINITY ($\mu\text{s/cm}$)	OTHER DETAILS
0.00 - 0.10	A1	Sandy loam (SL)	7.0	27.0	Dark red (2.5YR3/6). Massive apedal structure with a dry earthy fabric and weak strength. Non-effervescent.
0.10 - 0.30	A1	Sandy loam (SL)	7.0	22.1	Dark red (2.5YR3/6). Massive apedal structure with a dry earthy fabric and weak strength. Non-effervescent.
0.30 - 0.70	B21	Sandy loam (SL)(K)	7.0	23.3	Dark red (2.5YR3/6). 5% 2-6mm fine gravelly subangular quartz fragments and 2% 20-60mm subangular coarse gravelly quartz fragments. Non-effervescent.
0.70 - 1.00	B22	Loamy sand (LS)	7.0	17.6	Yellowish red (5YR4/6). 10% 2-6mm fine gravelly subangular quartz fragments and 1% 20-60mm subangular coarse gravelly quartz fragments. Non-effervescent.
1.00 - 1.40	B22	Loamy sand (LS)	7.0	16.3	Yellowish red (5YR4/6). 15% 2-6mm fine gravelly subangular quartz fragments and 1% 20-60mm subangular coarse gravelly quartz fragments. Non-effervescent.
1.40 - 1.70	B23	Clay loam (CL)	7.0	23.4	Dark red (2.5YR3/6). 5% 2-6mm fine gravelly subangular quartz fragments Non-effervescent.
1.70 - 2.00	B23	Clay loam sandy (CLS)	7.0	21.3	Dark red (2.5YR3/6). Massive apedal structure with a dry earthy fabric and firm strength. Non-effervescent.

VEGETATION: **Site 177** (Albrecht, D. and Pitts, B. 1999).

UPPER STRATUM - Isolated clump of trees	
Dominant species	Fork-leaved Corkwood
Other species	Ironwood, Dead Finish, Ghost Gum, River Red Gum,
MID STRATUM - Isolated shrubs	
Dominant species	
Other species	Ironwood, Desert Cassia, Acacia Bush, Tall Saltbush, Purple Plumegrass, Colony Wattle, Annual Saltbush, Dead Finish, Cannon-ball Saltbush, Weeping Emu Bush
LOWER STRATUM - Grassland	
Dominant species	Buffel Grass,
Other species	Woollyoat Grass, Buckbush, Tall Copper Burr, Five-minute Grass, Native Oat-grass, <i>Maireana scleroptera</i> , Wild Hops, Bunched Kerosene Grass, Erect Kerosene Grass, Yellow Billybuttons, Rubber Bush, Bogan Flea, Munyeroo, Wire-leaf Mistletoe, <i>Chenopodium truncatum</i> , Colocynth, Ruby Saltbush, Caustic Weed (A), Ironwood Mistletoe, Caper Bush, White Paper Daisy, Perennial Yellowtop, Diel's Pigeon Grass, Potato Bush, Cattle Bush.

(See Appendix 3 for botanical names)