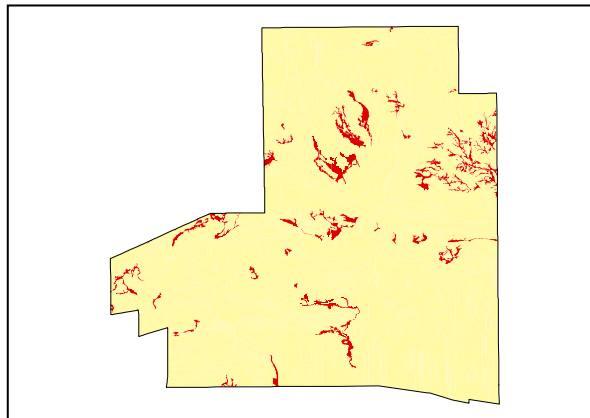


Drainage Features

LAND UNIT 5.07**Moderately Confined Drainage Floor**

DESCRIPTION: Moderately confined drainage floors (20-40m wide) with Coolabah trees over Buffel Grass.
SITES: 041, 107

**Distribution of land unit.**

Area = 12.97 km², 3.94% of mapped area.

LAND CAPABILITY:

ATTRIBUTES	
SLOPE (%)	2
RELIEF (m)	2
SOIL DEPTH (m)	>2.00
SURFACE CONDITION	Loose. Firm in part.
DEPTH TO SUBSTRATE (m)	>2.00
REACTION TREND (pH)	6.0 to 7.5
OUTCROP (%)	-
RUNOFF	Rapid
PERMEABILITY	Moderately permeable
DRAINAGE	Moderately well drained
SALINITY (µs/cm)	16.0 to 37.6

DEVELOPMENT RISKS	
EROSION	High
ROCK FALL	None
SHEET FLOODING	Severe
INUNDATION	Severe
SALINITY	None
ALKALINITY	Slight
ACIDITY	None

CAPABILITY CLASS					
Formed Roads	Shallow excavations	Septic Disposal	Horticulture	Building Foundations	Landscaping
Very Poor	Very Good	Very Good	Good	Fair	Good

Drainage Features

TECHNICAL DETAILS**LAND UNIT 5.07**

DESCRIPTION: Moderately confined drainage floors (20-40m wide) with Coolabah trees over Buffel Grass.

GEOLOGY: An accumulation of Quaternary, most likely Holocene, sediments eroded and transported from the high relief Proterozoic and Palaeozoic hills and ranges form this land unit.

LANDFORM: This land unit is within a broader flood plain or a broad drainage system. It is characterised by frequently active erosion and aggradation by channelled or overbank stream flow. It is generally restricted to depressions (20-40m wide) into which runoff water is channelled.

SOIL: Example **Site 107**
MGA. Coordinates: 7370350mN, 383842mE

CLASSIFICATION: Desert Loam. Kandosol - KA, AB, AH, CD, A, E, K, N, X

SURFACE: Firm, coherent mass of individual particles or aggregates with occasional loose aggregates that separate when touched.

DEPTH (m)	HORIZON	TEXTURE	pH	SALINITY ($\mu\text{s}/\text{cm}$)	OTHER DETAILS
0.00 - 0.10	A1	Loamy sand (LS)(F)	6.0	19.1	Dark reddish brown (5YR3/4). Massive apedal, slightly coherent structure with a sandy fabric.
0.10 - 0.30	A3	Clay loam sandy (CLS)	7.0	37.6	Dark brown (7.5YR3/3). Weak 5-10mm polymorphic pedality with a rough ped fabric.
0.30 - 0.70	A3	Clay loam sandy (CLS)	7.0	33.9	Dark brown (7.5YR3/3). Weak 5-10mm polymorphic pedality with a rough ped fabric.
0.70 - 1.10	B2	Silty clay loam (ZCL)	7.0	17.2	Dark brown (7.5YR3/3). Weak 5-10mm polymorphic pedality with a rough ped fabric and a slight silky feeling.
1.10 - 1.60	B2	Silty clay loam (ZCL)	7.5	16.0	Dark brown (7.5YR3/3). Weak 5-10mm polymorphic pedality with a rough ped fabric and a slight silky feeling.
1.60 - 2.00	B2	Silty clay loam (ZCL)	7.5	27.6	Dark brown (7.5YR3/3). Weak 5-10mm polymorphic pedality with a rough ped fabric and a slight silky feeling.

VEGETATION: **Site 40** (Albrecht, D. and Pitts, B. 1999).

UPPER STRATUM - Open Woodland	
Dominant species	Bastard Coolabah
Other species	Beefwood, Ironwood,
MID STRATUM - Usually absent	
Dominant species	
Other species	Acacia Bush, Weeping Pittosporum, Climbing Saltbush, Desert Cassia, Fork-leaved Corkwood, Dead Finish, Whitewood, Wild Orange, Plumbush, Native Fuchsia, Silver Cassia.
LOWER STRATUM - Grassland	
Dominant species	Buffel Grass, Couch Grass, Silky Bluegrass, Swayback Nardoo
Other species	Variable Daisy, Australian Bindweed, Malvastrum, Narrow-leaf Joyweed, Spreading Saltbush, Leafy Burr Daisy, Desert Sneezeweed, Golden Beard Grass, Downs Nutgrass, Australian Carrot, Creek Windmill Grass, Woolly Glycine, Native Millet, Wild Hops, Ruby Saltbush, Mueller's Peppercress, Bush Banana, Grey Wrinklewort, Silky Browntop, Wire-leaf Mistletoe, Wild Oat, one or both of Tar Vine & Yipa, Caper Bush, <i>Convolvulus remotus</i> , Annual Verbine, Umbrella Grass, Small-flower Lovegrass, Weeping Emu Bush, Serrated Goodenia, Silky Goodenia and/or Heavy-soil Hand-flower, Rough Raspwort, Birdsville Indigo, <i>Ixiolaena chloroleuca</i> , Prickly Lettuce, Small-flowered Beetle Grass, <i>Oxalis radicata</i> , Small Yellow Daisy, Slender Sunray, Slender Spurge, Goathead Burr, Silver Sida, Goosefoot Potato Bush, Tomato Plant, Milk Thistle, <i>Maireana scleroptera</i> , Perennial Yellowtop, Northern Bluebush, Lemon-scented grass, Drooping Lovegrass, Tropical Speedwell, Succulent Copper Burr, Woolly Copper Burr, Bushy Groundsel

(See Appendix 3 for botanical names)