

Plains

LAND UNIT 4.13

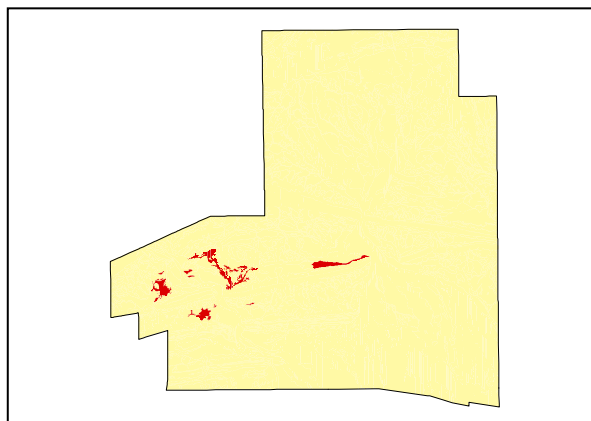
Calcareous Plains

DESCRIPTION: Calcareous plains with low shrubs over Oat Grass and Buffel Grass.

SITES: 092, 115



Distribution of land unit.



Area = 2.24 km², 0.68% of mapped area.

LAND CAPABILITY:

ATTRIBUTES	
SLOPE (%)	1
RELIEF (m)	1.00
SOIL DEPTH (m)	1.80
SURFACE CONDITION	Cryptogram. Loose in part. Surface flake.
DEPTH TO SUBSTRATE (m)	>1.80
REACTION TREND (pH)	10.0
OUTCROP (%)	-
RUNOFF	Rapid
PERMEABILITY	Very slow permeability
DRAINAGE	Poorly drained
SALINITY (µs/cm)	800 to 2800

DEVELOPMENT RISKS	
EROSION	Severe
ROCK FALL	None
SHEET FLOODING	Severe
INUNDATION	Severe
SALINITY	Severe
ALKALINITY	Severe
ACIDITY	None

CAPABILITY CLASS					
Formed Roads	Shallow excavations	Septic Disposal	Horticulture	Building Foundations	Landscaping
Fair	Fair	Very Poor	Very Poor	Fair	Very Poor

Plains

TECHNICAL DETAILS**LAND UNIT 4.13****DESCRIPTION:** Calcareous peneplain with low shrubs over Oat Grass and Buffel Grass.**GEOLOGY:** Quaternary, possibly Holocene, calcareous nodules and calcareous cutans over dolomite fragments. Origins of this material would be primarily from the northern Gillen Member Dolomite hills and ranges. It may be possible that a small calcareous aeolian component compliments the existing material.**LANDFORM:** This land unit consists of gently undulating plains with extremely low relief and sparse, slowly migrating stream channels which form a non-directional integrated tributary pattern. It is generally formed within a broader drainage system and is subject to sheet flow. Very slow permeability, due to the high clay proportion in the soil, assists rapid runoff. Drainage of the soil is subsequently poor.**SOIL:** Example from **Site 115**
MGA. Coordinates: 7370565mN, 377669mE.

CLASSIFICATION: Grey-brown and Red Calcareous Soil. Calcarosol - CA, CQ, DU, B, F, M, O, X					
SURFACE: 1% mixture of 20-60mm subrounded sandstone, quartz and dolomite (<1%) fragments. Most of the surface has a cryptogam crusting with some areas having a thin surface flake and minor areas having loose characteristics.					
DEPTH (m)	HORIZON	TEXTURE	pH	SALINITY (µs/cm)	OTHER DETAILS
0.00 - 0.10	A1(k)	Clay loam (CL)	10.0	800	Reddish brown (5YR4/3). 5% 2-6mm subangular calcrete fragments (most likely dolomite fragments) due to non-effervescence.
0.10 - 0.20	B21(k)	Light clay (LC)	10.0	2800	Yellowish brown (5YR4/6). 10% 2-6mm subangular calcrete fragments (most likely dolomite fragments) due to non-effervescence.
0.20 - 0.50	B22(k)	Light clay (LC)	10.0	2530	Yellowish brown (5YR4/6). 20% 2-6mm subangular calcrete fragments and 2% 6-20mm subangular calcrete fragments. Highly effervescent.
0.50 - 1.00	B23(k)	Clay loam sandy (CLS)	10.0	1919	Yellowish brown (5YR4/6). 20% 2-6mm subangular calcrete fragments and 5% 6-20mm subangular calcrete fragments. Highly effervescent.
1.00 - 1.30	B23(k)	Clay loam sandy (CLS)	10.0	1479	Red (2.5YR4/6). 20% 2-6mm subangular calcrete fragments and 2% 6-20mm subangular calcrete fragments. Very highly effervescent.
1.30 - 1.80	B23(k)	Clay loam sandy (CLS)	10.0	1493	Red (2.5YR4/6). 20% 2-6mm subangular calcrete fragments and 2% 6-20mm subangular calcrete fragments. Very highly effervescent.

VEGETATION: **Site 43** (Albrecht, D. & Pitts, B. 1999).

UPPER STRATUM - Usually absent	
Dominant species	
Other species	Beefwood, Dead Finish
MID STRATUM - Usually absent	
Dominant species	Cannon-ball Saltbush, Needlewood
Other species	Ruby Saltbush, Spiny Saltbush, Mulga, Mallee Saltbush, Spotted Fuchsia, <i>Eremophila sturtii</i> , Witchetty Bush, Tall Saltbush, Old man Saltbush, Native Fuchsia
LOWER STRATUM - Isolated grasses	
Dominant species	Oat Grass, Eight Day Grass, Woolly Copper Burr
Other species	Spreading Saltbush, Veined Peppergrass, Tall Copper Burr, Grey Copper Burr, Five-minute Grass, Bogan Flea, Goathead Burr, Succulent Copper Burr, Mallee Lovegrass, Creek Windmill Grass, Woolly Yellow-heads, Buffel Grass, one or both of Tar Vine & Yipa, Native Oat-grass, Mueller's Peppergrass, White Paper Daisy, Buckbush, <i>Sclerolaena costata</i> , Desert Cassia, Nodding Thread-petal, Yellow Billybuttons, Button Grass, Pitted Lovegrass, Tropical Speedwell, Satiny Bluebush, Sporobolus blakei, Desert Chinese Lantern, <i>Amyema gibberula</i> var. <i>gibberula</i> , Bunched Kerosene Grass, Annual Saltbush, Leafy Burr Daisy, Leafy Burr Daisy, Australian Bindweed, Cotton Panic Grass, Serrated Goodenia, Three-wing Bluebush, Paper Foxtail, <i>Senna artemisioides</i> subsp. <i>quadrifolia</i> , Sand Sida, Small-Burr Grass.

(See appendix 3 for botanical names)