

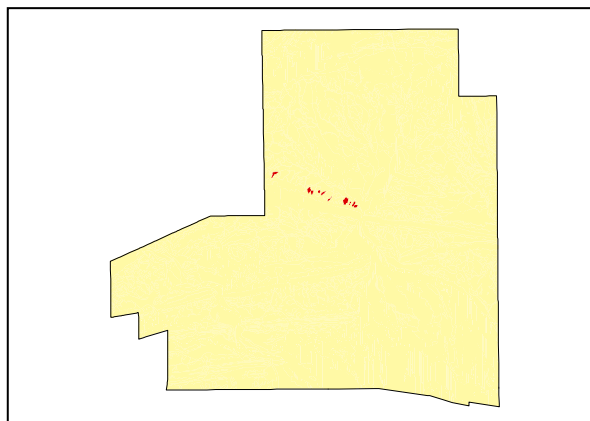
Slopes

LAND UNIT 3.15**Steep Rubble Colluvial Fans**

DESCRIPTION: Steep (>38%) rubble colluvial fans with Witchetty Bush over annual and perennial grasses.
SITE: 058



Distribution of land unit.



Area = 0.31 km², 0.10% of mapped area.

LAND CAPABILITY:

ATTRIBUTES	
SLOPE (%)	30
RELIEF (m)	40
SOIL DEPTH (m)	>0.10
SURFACE CONDITION	Loose
DEPTH TO SUBSTRATE (m)	>0.10
REACTION TREND (pH)	7.0
OUTCROP (%)	-
RUNOFF	Very rapid
PERMEABILITY	Highly permeable
DRAINAGE	Rapidly drained
SALINITY (µs/cm)	56.3

DEVELOPMENT RISKS	
EROSION	High
ROCK FALL	Severe
SHEET FLOODING	None
INUNDATION	None
SALINITY	None
ALKALINITY	None
ACIDITY	None

CAPABILITY CLASS					
Formed Roads	Shallow excavations	Septic Disposal	Horticulture	Building Foundations	Landscaping
Very Poor	Very Poor	Very Poor	Very Poor	Very Poor	Very Poor

Slopes

TECHNICAL DETAILS**LAND UNIT 3.15**

DESCRIPTION: Steep (>30%) rubble colluvial fans with Witchetty Bush over annual and perennial grasses.

GEOLOGY: Quaternary soil formation with scree material ranging in size from boulders to coarse gravel derived from the Upper Palaeozoic Hills and ranges.

LANDFORM: The steeply inclined slopes of this landform generally have slopes greater than 35% with a relief to 40m above the surrounding lower lying areas. Due to rapid runoff, soil depth formation is minimal and very low (10-20%) in clay content. High permeability and rapid drainage of the soils would be common due to the range of rock fragment sizes and the coarse nature of the soil. Drainage channels are generally poorly formed and rock creep down slope is commonly assisted by regular rock falls from the upper parts of the fans.

SOIL: Example from **Site 058**
MGA. Coordinates: 7376605mN, 383186mE.

CLASSIFICATION: Lithosol. Rudosol - RU, CY, CZ, AR, H, L, T

SURFACE: 2% >2m large angular quartzite boulders, 10% 600mm-2m angular quartzite boulders 30% 20-60mm angular tabular coarse quartzite gravel. Minimal soil formation is broad and shallow on flatter areas and minimal on maximum slopes.

DEPTH (m)	HORIZON	TEXTURE	pH	SALINITY (µs/cm)	OTHER DETAILS
0.00 - 0.10	A1	Sandy loam (SL) (F)	7.0	56.3	Dark reddish brown (2.5YR3/3). 25% 2-6mm angular tabular fine gravelly quartz fragments, 15% 6-20mm angular tabular medium gravelly quartz fragments and 20% 20-60mm coarse gravelly angular quartzite fragments. Fine sand particles are present in an apedal incoherent structure. Non effervescent.

VEGETATION: Land Unit 2.1 (Mahney T. and Grant R., 1993)

UPPER STRATUM - Usually absent	
Dominant species	
Other species	Mulga, Witchetty Bush, Whitewood, Wild Orange, Weeping Emu Bush, Long-leaf Corkwood.
MID STRATUM - Isolated shrubs	
Dominant species	
Other species	Witchetty Bush, Whitewood, Rock Fuchsia Bush, Native Fuchsia, Silver Cassia, Blunt-leaf Cassia.
LOWER STRATUM - Isolated clump of tussock grasses	
Dominant species	
Other species	Buffel Grass, Woolly Cloak Fern, Orange Spade Flower, Green Peppergrass, Five-minute Grass, Bogan Flea, Woolly Cloak Fern.

(see Appendix 3 for botanical names)