

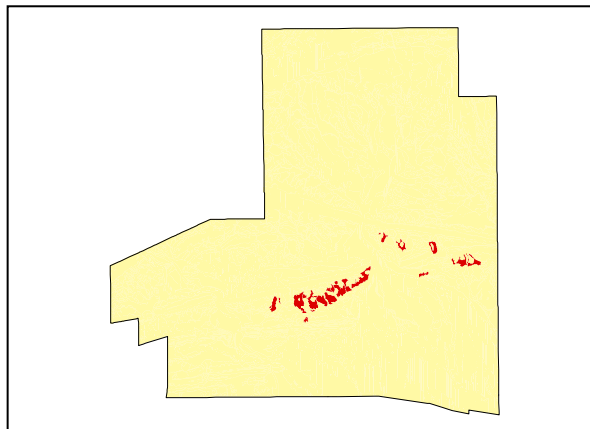
Slopes

LAND UNIT 3.07**Rocky Silcrete Lower Wash Slope**

DESCRIPTION: Lower (1-5%) wash slope of rocky silcrete fragments with Mulga over sparse forbs.
SITES: 081, 084



Distribution of land unit.

Area = 3.28 km², 1.00% of mapped area.**LAND CAPABILITY:**

ATTRIBUTES	
SLOPE (%)	5
RELIEF (m)	10
SOIL DEPTH (m)	0.40
SURFACE CONDITION	Loose
DEPTH TO SUBSTRATE (m)	>0.40
REACTION TREND (pH)	6.0
OUTCROP (%)	-
RUNOFF	Rapid
PERMEABILITY	Moderately permeable
DRAINAGE	Moderately well drained
SALINITY (µs/cm)	14.4 to 16.4

DEVELOPMENT RISKS	
EROSION	Severe
ROCK FALL	None
SHEET FLOODING	Moderate
INUNDATION	Slight
SALINITY	None
ALKALINITY	None
ACIDITY	None

CAPABILITY CLASS					
Formed Roads	Shallow excavations	Septic Disposal	Horticulture	Building Foundations	Landscaping
Good	Poor	Poor	Very Poor	Good	Poor

Slopes

TECHNICAL DETAILS**LAND UNIT 3.07**

DESCRIPTION: Lower (1-5%) wash slopes with a high proportion of silcrete fragments with Mulga over sparse forbs.

GEOLOGY: Quaternary deposited detrital silcrete fragments originating from Proterozoic host rock.

LANDFORM: The very gently inclined slopes of this landform generally have slopes to 5% with a relief to 10m above the surrounding lower lying areas. The low (10-20%) clay content of the soil and the high coarse fraction enable moderately rapid runoff with moderate drainage and permeability. Where the surface structure has been disturbed, erosional channelling has formed.

SOIL: Example **Site 084**
MGA. Coordinates: 7371751mN, 383324mE

CLASSIFICATION: Lithosol. Rudosol RU, CY, CZ, AR, I, L, U

SURFACE: 20% 20-60mm subangular coarse gravelly quartz and silcrete. 50% 6-20mm fine gravelly subangular quartz fragments.

DEPTH (m)	HORIZON	TEXTURE	pH	SALINITY ($\mu\text{s/cm}$)	OTHER DETAILS
0.00 - 0.10	A11	Sandy loam (SL)	6.0	16.4	Dark red (10R3/6). 5% 2-6mm fine gravelly angular to subangular quartz fragments, 4% 6-20mm angular to subangular and 3% 20-60mm subangular quartz and silcrete fragments.
0.10 - 0.40	A12	Sandy loam (SL)	6.0	14.4	Dark red (10R3/6). 10% 2-6mm fine gravelly quartz fragments, 5% 6-20mm medium gravelly subangular quartz fragments and 5% 20-60mm coarse gravelly angular silcrete and quartz fragments.

VEGETATION: **Site 26** (Albrecht, D. & Pitts, B. 1999).

UPPER STRATUM - Usually absent	
Dominant species	
Other species	Mulga
MID STRATUM - Isolated clump of shrubs	
Dominant species	Mulga.
Other species	Rock Fuchsia Bush, Spreading Saltbush, Silver Cassia.
LOWER STRATUM - Isolated clump of heath shrubs	
Dominant species	Bladder saltbush, <i>Ptilotus parvifolius</i> var. <i>parvifolius</i> , Woolly Copper Burr.
Other species	Buffel Grass, Mueller's Peppergrass, <i>Maireana campanulata</i> , Three-wing Bluebush, Succulent Copper Burr, Grey Copper Burr, Katoora, Ruby Saltbush, Satiny Bluebush, Dwarf Lantern Flower, Boggabri, Buck Bush, Spiny Fanflower, Slender Glasswort, <i>Senna artemisioides nothosubsp. coriacea</i> .

(see Appendix 3 for botanical names)