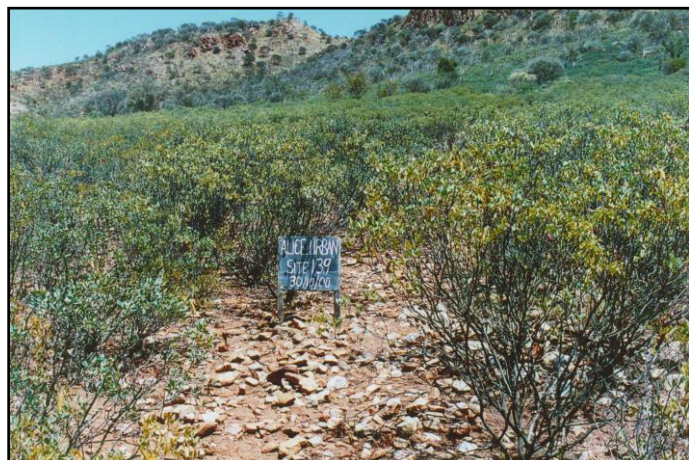


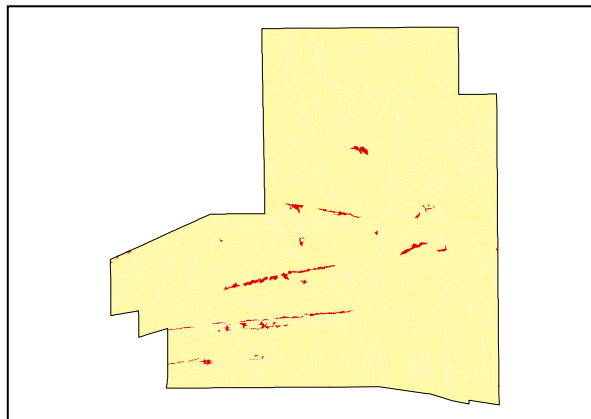
Slopes

LAND UNIT 3.02**Gravelly Mid-Wash Slopes**

DESCRIPTION: Gravelly Mid-Wash Slopes (5-10%) with Witchetty Bush over sparse grasses and forbs.
SITE: 139



Distribution of land unit.



Area = 3.21 km², 0.98% of mapped area.

LAND CAPABILITY:

ATTRIBUTES	
SHOPE (%)	10
RELIEF (m)	15
SOIL DEPTH (m)	0.50
SURFACE CONDITION	Loose
DEPTH TO SUBSTRATE (m)	>0.50
REACTION TREND (pH)	6.5
OUTCROP (%)	-
RUNOFF	Rapid
PERMEABILITY	Moderately permeable
DRAINAGE	Moderately well drained
SALINITY (µs/cm)	70.4

DEVELOPMENT RISKS	
EROSION	Severe
ROCK FALL	Slight
SHEET FLOODING	None
INUNDATION	None
SALINITY	None
ALKALINITY	None
ACIDITY	None

CAPABILITY CLASS					
Formed Roads	Shallow excavations	Septic Disposal	Horticulture	Building Foundations	Landscaping
Very Poor	Fair	Very Poor	Very Poor	Very Poor	Poor

Slopes

TECHNICAL DETAILS**LAND UNIT 3.02****DESCRIPTION:** Mid-Wash Slopes (5-10%) of gravelly material.**GEOLOGY:** Quaternary gravelly float material derived from quartzitic and sandstone Proterozoic host rocks from a higher relief.**LANDFORM:** The Gently inclined slopes of this unit are formed by the continually erosion of the upper ridges. This type of landform is active due to sheet wash, creep and occasional rockslides. Areas disturbed by mechanical or natural elements appear to develop rapidly into erosional channels. Natural drainage of this landform would follow a sheet flow pattern.**SOIL:** Example from **Site 139**.
MGA. Coordinates: 7375705mN, 383240mE**CLASSIFICATION:** Lithosol. Rudosol - RU, CY, DU, AR, R, I, M**SURFACE:** 60% 20-60mm subrounded to subangular coarse gravelly quartzite and sandstone fragments and 20% 6-20mm subangular medium gravelly quartzite and sandstone fragments.

DEPTH (m)	HORIZON	TEXTURE	pH	SALINITY ($\mu\text{s/cm}$)	OTHER DETAILS
0.00 – 0.50	A1	Sandy clay loam (SCL)	6.5	70.4	Dark red (2.5YR3/6). Apedal with single grains and a sandy fabric. 30% 2-6mm angular to subangular quartz fragments and 40% 20-60mm angular to subangular coarse gravelly quartz and sandstone fragments. Non effervescent.

VEGETATION: **Site 71** (Albrecht, D. & Pitts, B. 1999).

UPPER STRATUM - Absent	
Dominant species	
Other species	
MID STRATUM - Shrubland	
Dominant species	Witchetty Bush.
Other species	Rock Fuchsia Bush, Mulga Stick-plant, Dead Finish, Native Fuchsia, Tropical Speedwell, <i>Senna artemisioides subsp. alicia</i> , Blunt-leaf Cassia.
LOWER STRATUM - Isolated clump of tussock grasses	
Dominant species	
Other species	Mulga Fern, Cotton Panic Grass, Rat Tails, Green Peppergrass, Clements Paspalidium, Fire Sida, Five-minute Grass, Wild Hops, <i>Bulbostylis turbinata</i> , Bogan Flea, Buffel Grass, Woolly Cloak Fern, Woollyoat Grass, Purple Lovegrass, Silky Bluebush, Large Green Pussytail, <i>Senna artemisioides nothosubsp. coriacea</i> , Mulga Grass, Hillside Spinifex, Dwarf Lantern Flower, Desert Lantern Flower, Bunched Kerosene Grass, Short-leaved Rush, Black Crumbweed, Hill Everlasting, Tropical Speedwell, Tall Copper Burr, Potato Bush.

(see Appendix 3 for botanical names)