

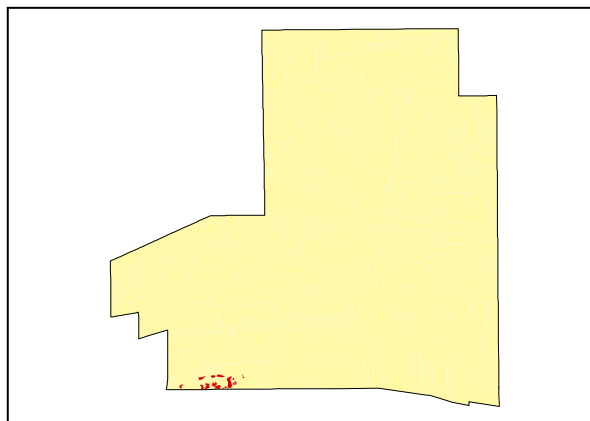
Rises

LAND UNIT 2.10**Loose Sandy Rises**

DESCRIPTION: Loose, randomly orientated Sandy rises with sparse Witchetty Bush over Hard Spinifex.
SITE: 128



Distribution of land unit.



Area = 0.55 km², 0.17% of mapped area.

LAND CAPABILITY:

ATTRIBUTES	
SLOPE (%)	8
RELIEF (m)	15
SOIL DEPTH (m)	>2.0
SURFACE CONDITION	Loose
DEPTH TO SUBSTRATE (m)	>2.0
REACTION TREND (pH)	7.0
OUTCROP (%)	-
RUNOFF	Very slow
PERMEABILITY	Highly permeable
DRAINAGE	Rapidly drained
SALINITY (µs/cm)	20.5 to 42.4

DEVELOPMENT RISKS	
EROSION	Severe
ROCK FALL	None
SHEET FLOODING	None
INUNDATION	None
SALINITY	None
ALKALINITY	None
ACIDITY	None

CAPABILITY CLASS					
Formed Roads	Shallow excavations	Septic Disposal	Horticulture	Building Foundations	Landscaping
Poor	Very Good	Very Good	Very Good	Poor	Very Good

Rises

TECHNICAL DETAILS**LAND UNIT 2.10**

DESCRIPTION: Randomly orientated sand dune crests with sparse Witchetty Bush over Hard Spinifex.

GEOLOGY: Quaternary aeolian? sand deposits. Possibly part of the Upper Stuart formation (Litchfield W.H. 1969).

LANDFORM: The undulating rises of sand with slopes of 8% and relief of about 15m form a typical Dune land form pattern. The very sandy, unconsolidated characteristics allow rapid drainage and permeability with very little runoff. Drainage features are not evident and wind erosion would be the major transportation medium.

SOIL: Example from **Site 128**.
MGA. Coords: 7376576mN, 376419mE

CLASSIFICATION: Lithosol. Tenosol - TE, DS, AO, AR, C, E, K, K, X

SURFACE: Loose sand

DEPTH (m)	HORIZON	TEXTURE	pH	SALINITY (µs/cm)	OTHER DETAILS
0.00 - 0.10	A11	Loamy sand (LS)	7.0	24.1	Reddish brown (5YR4/4). Apedal single grain and incoherent with a Sandy fabric.
0.10 - 0.30	A12	Loamy sand (LS)	7.0	32.3	Reddish brown (5YR4/4). Apedal single grain and incoherent with a sandy fabric.
0.30 - 0.60	B21	Sand (S)	7.0	42.4	Yellowish red (5YR5/6). Apedal single grain and incoherent with a sandy fabric.
0.60 - 0.90	B22	Sand (S)	7.0	28.2	Yellowish red (5YR5/6). Apedal single grain and incoherent with a sandy fabric.
0.90 - 1.50	B23	Sand (S)	7.0	32.4	Yellowish red (5YR5/6). Apedal single grain and incoherent with a sandy fabric.
1.50 - 2.00	B24	Sand (S)	7.0	20.5	Yellowish red (5YR5/6). Apedal single grain and incoherent with a sandy fabric.

VEGETATION: **Site 77** (Albrecht, D. and Pitts, B. 1999).

UPPER STRATUM - Usually absent	
Dominant species	
Other species	Bloodwood
MID STRATUM - Isolated clump of shrubs	
Dominant species	Witchetty Bush
Other species	Colony Wattle, Wire-leaf Mistletoe, Mulga, Ironwood, Ironwood Mistletoe, Fork-leaved Corkwood, Desert Cassia, Wild Orange
LOWER STRATUM - Open grassland	
Dominant species	Hard Spinifex
Other species	Woollybutt Grass, Long Tails, Buck Bush, Tall Copper Burr, Lifesaver Burr, Bindieye, Pale-leaf Mistletoe, Tar Vine & Yipa, Variable Daisy, Buffel Grass, Small Yellow Button, Colocynth, Sticky Hopbush, Ruby Saltbush, Woollyoat Grass, Woollybutt Wanderrie, Caustic Weed (A), Tangled Lechenaultia, Green Peppergrass, Bandicoot Grass, Tall Saltbush, Johnson's Copper Burr, Sand Sida, Wild Tomato, Desert Chinese Lantern, Wire-leaf Mistletoe, Desert Goosefoot, Australian Bindweed, Cotton Panic Grass, Climbing Saltbush, Purple Lovegrass, Weeping Emu Bush, Veined Peppergrass, <i>Maireana scleroptera</i> , Bush Banana, Spiny Saltbush, Cartwheel Burr, Silver Sida, Goosefoot Potato Bush, Potato Bush, Spiny Potato Bush.

(See Appendix 3 for botanical names)